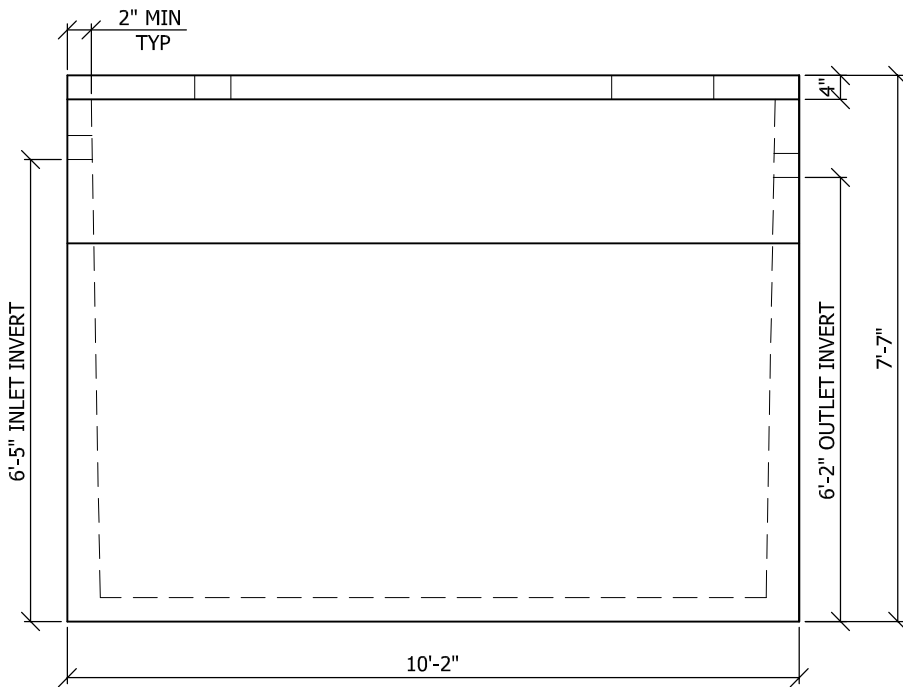
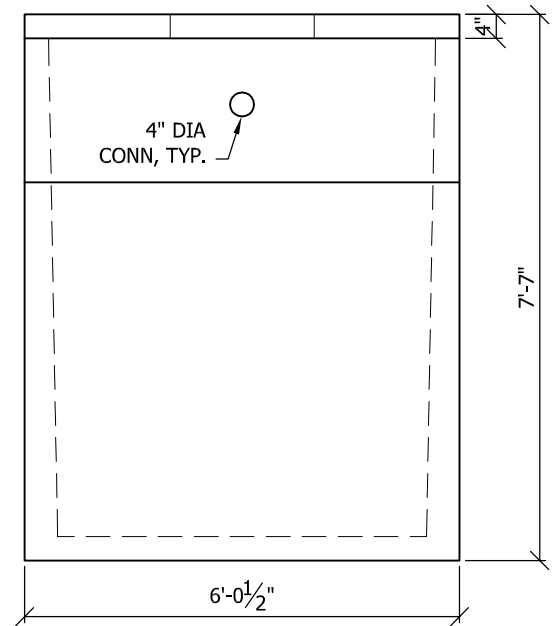


TOP VIEW



SIDE VIEW



END VIEW

**NOTES:**

1. NOMINAL TANK CAPACITY = 2000 U.S. GALLONS
2. 28 DAY CONCRETE STRENGTH = 4000 PSI
3. MANHOLE RING AND COVER NOT INCLUDED OR CAST IN

Rev.#	Rev.Description	Date



**WORKMAN PRECAST  
CORPORATION**  
P.O. Box 400  
Louisville, NE 68037  
TEL: (402) 234-2100  
FAX: (402) 234-2128

SEPTIC TANK 2000 GAL			
DRWN	DATE	CHKR	DATE
PKM	10/14/09	NAM	10/15/09

PIECE  
MARK  
**ST-2000**