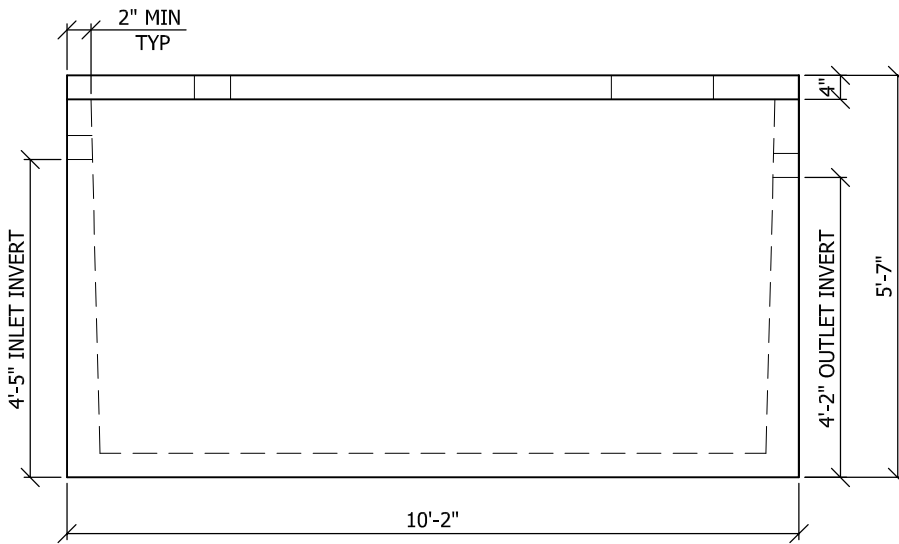
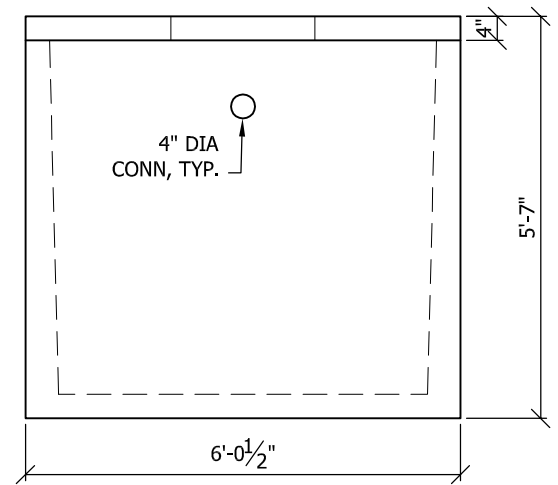


TOP VIEW



SIDE VIEW



END VIEW

NOTES:

1. NOMINAL TANK CAPACITY = 1500 U.S. GALLONS
2. 28 DAY CONCRETE STRENGTH = 4000 PSI
3. MANHOLE RING AND COVER NOT INCLUDED OR CAST IN

				WORKMAN PRECAST CORPORATION P.O. Box 400 Louisville, NE 68037 TEL: (402) 234-2100 FAX: (402) 2342128				SEPTIC TANK 1500 GAL				PIECE MARK	
				DRWN	DATE	CHKR	DATE	ST-1500					
Rev.#	Rev.Description	Date		PKM	10/14/09	NAM	10/15/09						