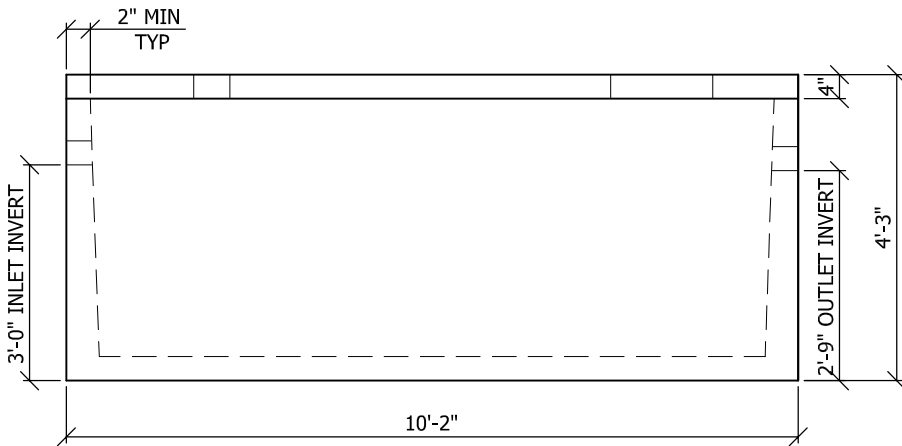
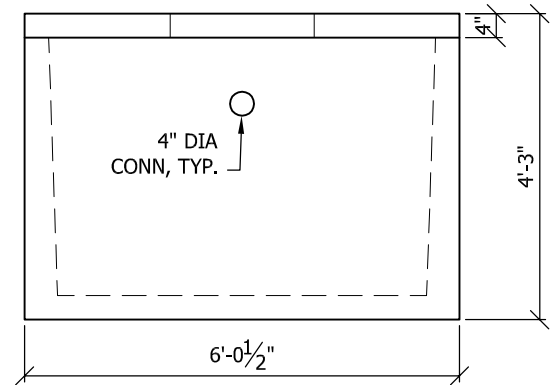


TOP VIEW



SIDE VIEW



END VIEW

**NOTES:**

1. NOMINAL TANK CAPACITY = 1000 U.S. GALLONS
2. 28 DAY CONCRETE STRENGTH = 4000 PSI
3. MANHOLE RING AND COVER NOT INCLUDED OR CAST IN

Rev.#	Rev.Description	Date		<b>WORKMAN PRECAST CORPORATION</b> P.O. Box 400 Louisville, NE 68037 TEL: (402) 234-2100 FAX: (402) 2342128				<b>SEPTIC TANK 1000 GAL</b>				PIECE MARK  <b>ST-1000</b>
				DRWN	DATE	CHKR	DATE	PKM	10/14/09	NAM	10/15/09	