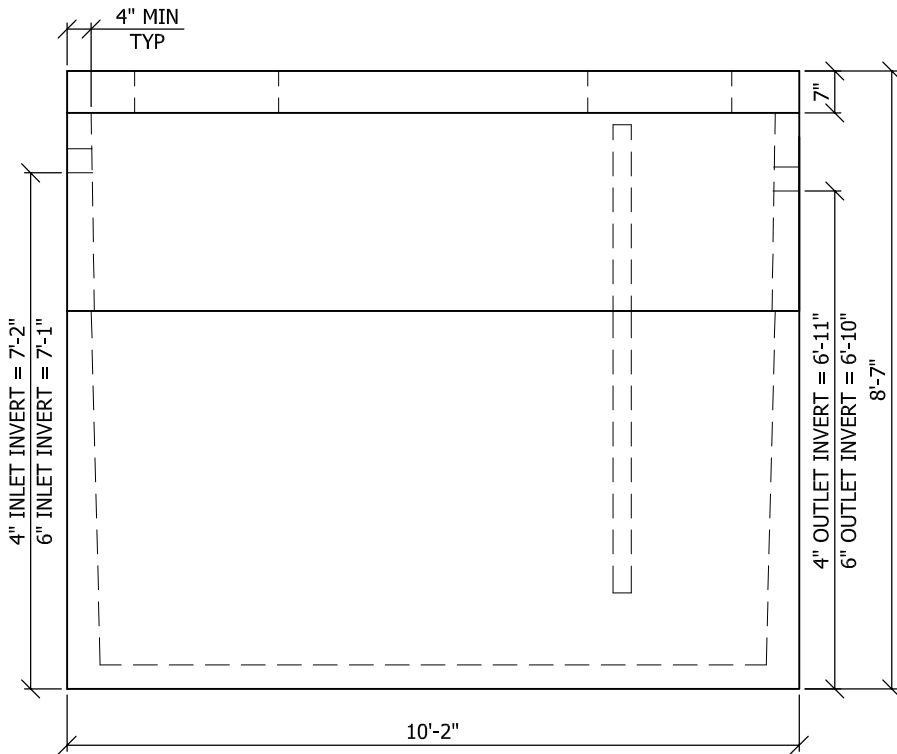
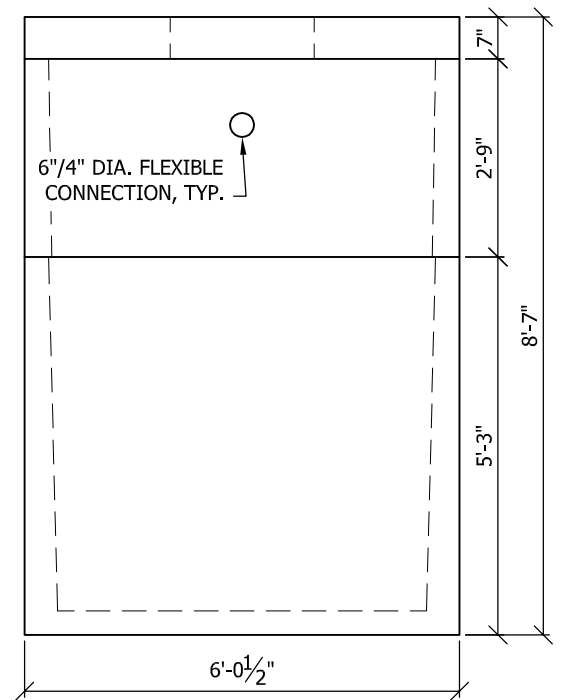


TOP VIEW



SIDE VIEW



END VIEW

**NOTES:**

1. NOMINAL TANK CAPACITY = 2500 U.S. GALLONS
2. SOIL FILL DEPTH ON LID: 8" Min., 36" Max.
3. TANK AND LID DESIGNED FOR HS20 WHEEL LOAD
4. 28 DAY CONCRETE STRENGTH = 4000 PSI
5. MANHOLE RING AND COVER NOT INCLUDED OR CAST IN

Rev.#	Rev.Description	Date



**WORKMAN PRECAST  
CORPORATION**  
 P.O. Box 400  
 Louisville, NE 68037  
 TEL: (402) 234-2100  
 FAX: (402) 2342128

GREASE INTERCEPTOR 2500 GAL			
DRWN	DATE	CHKR	DATE
PKM	10/14/09	NAM	10/15/09

PIECE  
MARK  
**GI-2500**